



**Premium Garage Doors-
Modern Design.
Lasting Performance.**

Table Of Content

Aluminum Alloy Frameless Garage Door Series	04
Flat Panel Aluminum Garage Door Series	10
Steel and Aluminum Foam-Insulated Garage Door Series	15
Aluminum Profile Garage Door Series	19
Garage Door Opener Specifications	23
High-End Rolling Shutter Door Series	26



Exclusive customization · Leading technology





Exclusive customization · Leading technology

ALUMINUM ALLOY FRAMELESS GARAGE DOOR SERIES



Product Specifications

Frame Colors: Matte Black, White (custom solid colors available)

Door Panel Thickness: 40mm

Aluminum Wall Thickness: 2.5mm

Reinforcement Ribs: 2.5mm or 5.0mm

Tempered Glass Thickness: 5.0mm

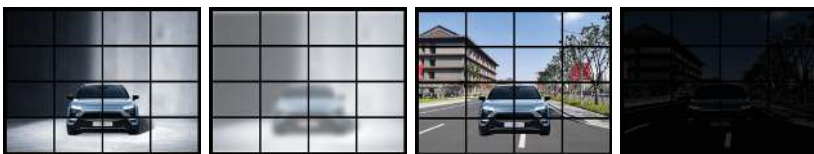
Color Configuration



Matte Black

White

Glass products

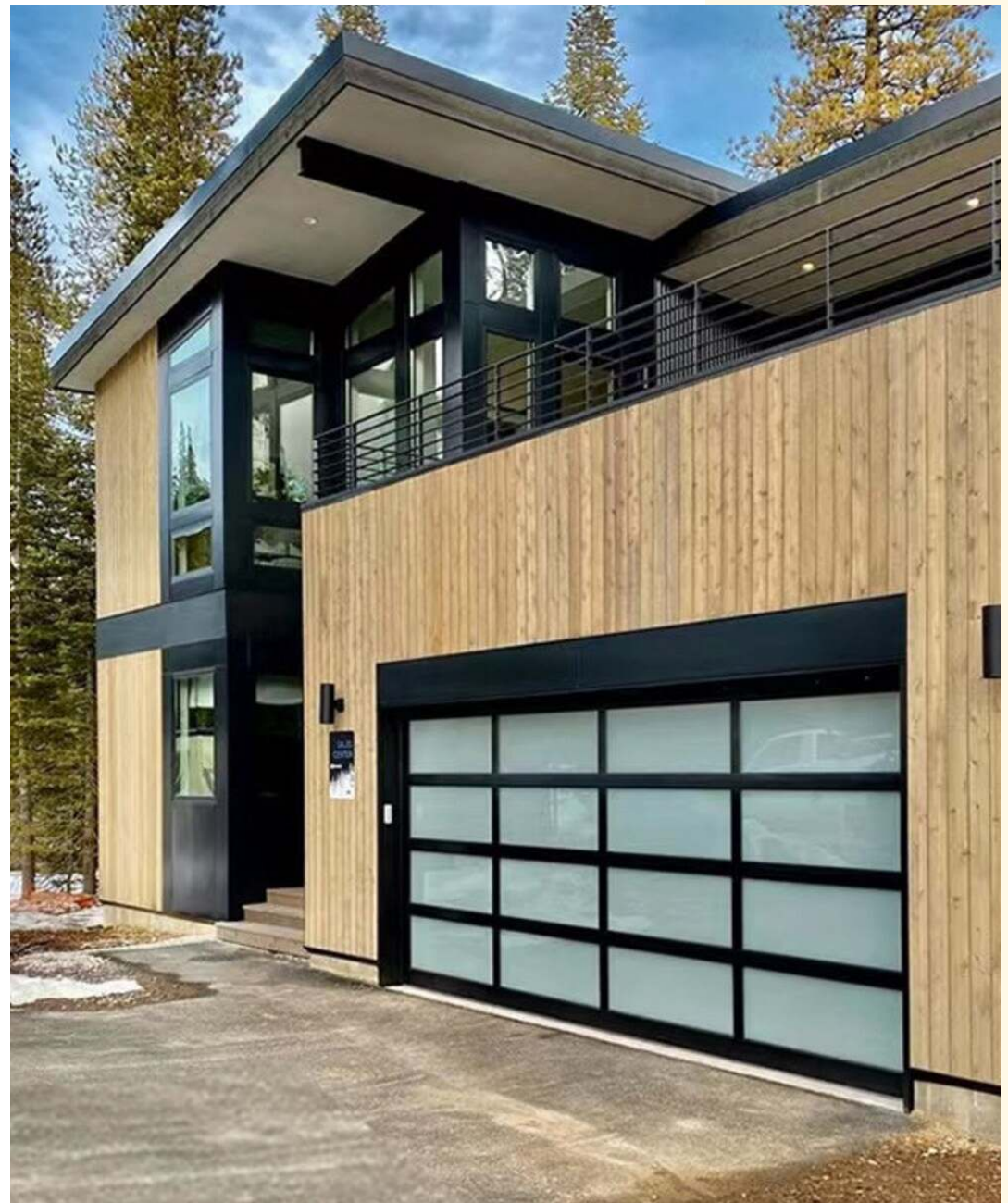


Clear glass

Frosted glass

Mirror glass

Black Glass



EXCLUSIVE CUSTOMIZATION · LEADING TECHNOLOGY



Description

This series delivers a clean, minimalist aesthetic with solid flat aluminum panels for a seamless look. Built with premium-grade aluminum for superior durability and corrosion resistance.

EXCLUSIVE CUSTOMIZATION · LEADING TECHNOLOGY



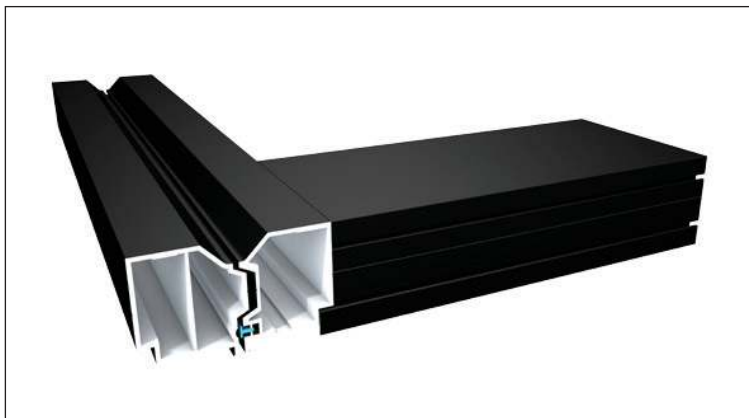
EXCLUSIVE CUSTOMIZATION · LEADING TECHNOLOGY







FLAT PANEL ALUMINUM GARAGE DOOR SERIES



Product Specifications

Colors: Matte Black (custom solid colors available)

Door Panel Thickness: 60mm

Aluminum Wall Thickness: 3.0mm (single or double layer optional)

Tempered Glass Thickness: 5.0mm

Color configuration



Matte Black

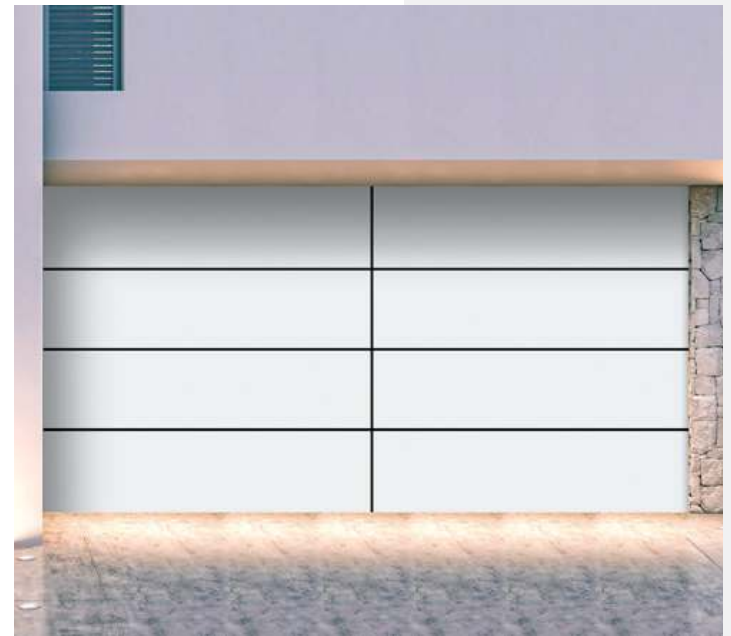




Description

Upgrade your home with sleek, modern frameless garage doors. Engineered for strength and style, this series combines aluminum alloy frames with tempered glass panels to create a sophisticated, contemporary look that enhances curb appeal.

EXCLUSIVE CUSTOMIZATION · LEADING TECHNOLOGY



EXCLUSIVE CUSTOMIZATION · LEADING TECHNOLOGY



EXCLUSIVE CUSTOMIZATION · LEADING TECHNOLOGY

STEEL AND ALUMINUM FOAM-INSULATED GARAGE DOOR SERIES



Product Specifications

Panel Thickness: 40mm

Wall Thickness: 0.4mm

Colors Available: Coffee, Dark Gray, Luxurious Milky White, Brushed Copper, Golden Oak

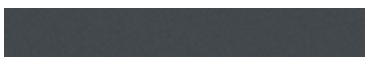
Color configuration



Brushed Copper



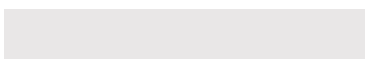
Golden Oak



Dark Gray



Coffee

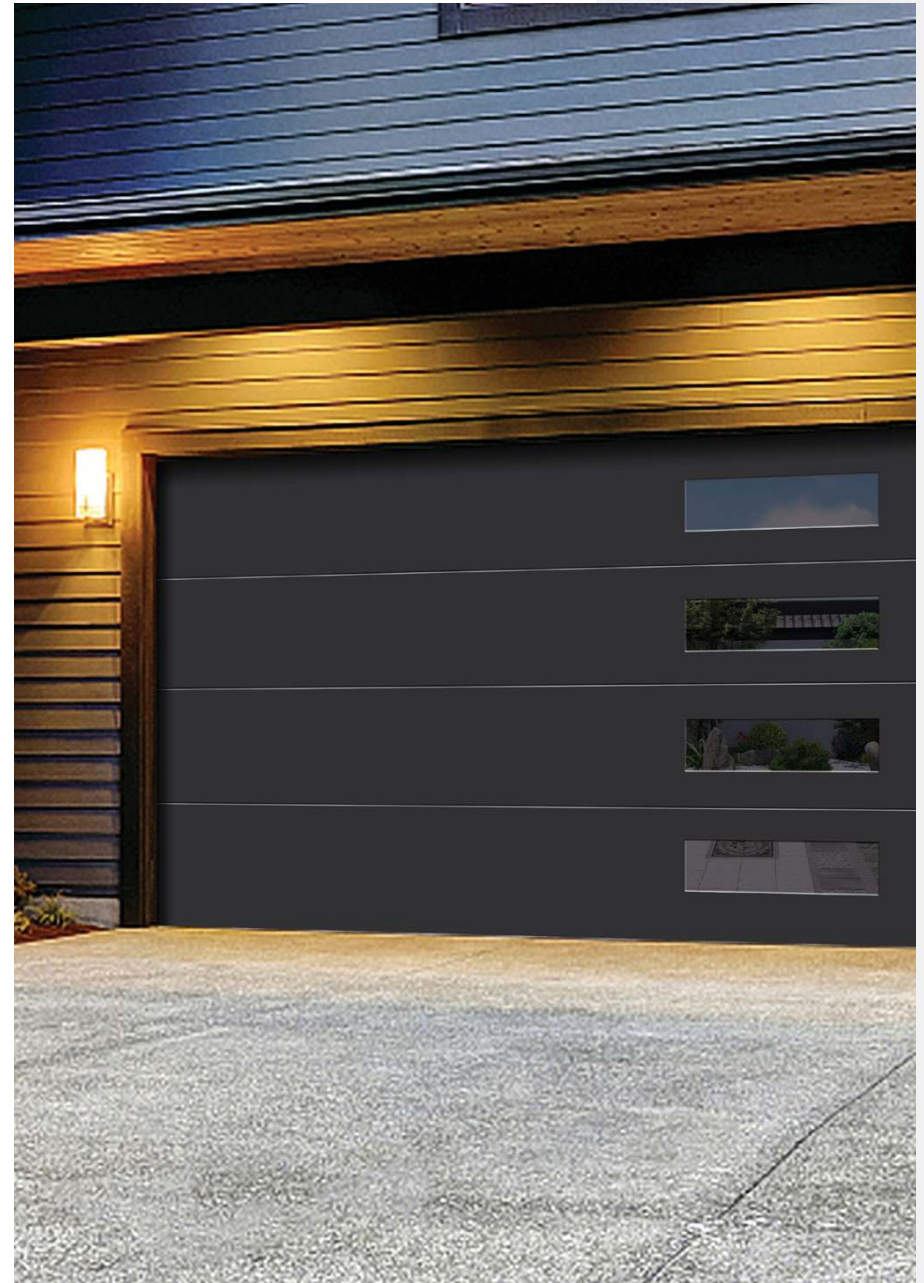


Luxurious Milky White





EXCLUSIVE CUSTOMIZATION · LEADING TECHNOLOGY



EXCLUSIVE CUSTOMIZATION · LEADING TECHNOLOGY



Description

Designed for superior thermal insulation, these foam-filled doors improve energy efficiency and reduce noise. Available in a range of elegant finishes to complement any architectural style.

EXCLUSIVE CUSTOMIZATION · LEADING TECHNOLOGY

ALUMINUM PROFILE GARAGE DOOR SERIES



Product Specifications

Door Thickness: 40mm

Aluminum Material Thickness: 1.2mm

Color configuration



Electrophoresis Brushed Copper



Electrophoresis Copper



Coffee



Luxurious Milky White



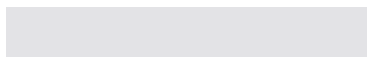
Brushed Copper



Black Walnut Wood Grain



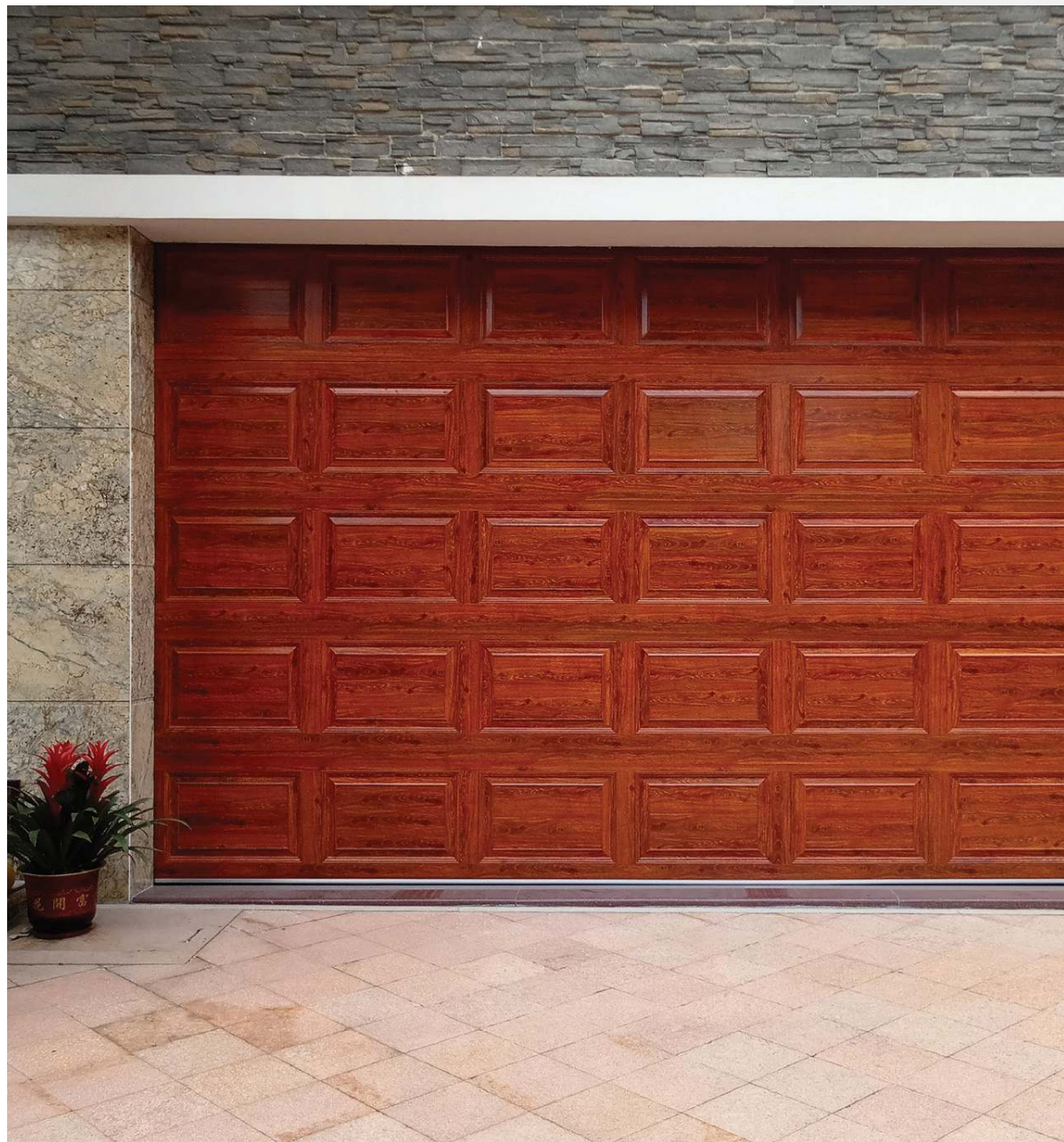
Sand Gray



Silver



Fluorocarbon Bronze Brushed









Description

This versatile series features lightweight aluminum profiles with multiple finish options, offering customizable style and reliable performance for residential or commercial applications.

EXCLUSIVE CUSTOMIZATION · LEADING TECHNOLOGY

HIGH-END HARD ROLLING SHUTTER DOOR SERIES



Product Specifications

Door panel thickness: 2.0mm

Door panel height: 80mm

Aluminum wall thickness: 1.0mm

Color configuration



Brushed copper



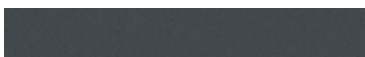
Golden Oak



Coffee



Luxurious milky white



Dark Gray





EXCLUSIVE CUSTOMIZATION · LEADING TECHNOLOGY